

AXLE LIFT

WEWELER - A45

AL-456-DOC

This Weweler Bolt-On axle lift is developed for Weweler systems with an A25, A45, C25 or C45 hangerbracket with a welded bracing. It is suitable for drum brake systems and a few disc brake systems. Mega airspring possible for more stroke. Contact Weweler for precise system configurations.

The Bolt-On lift isn't suitable when:

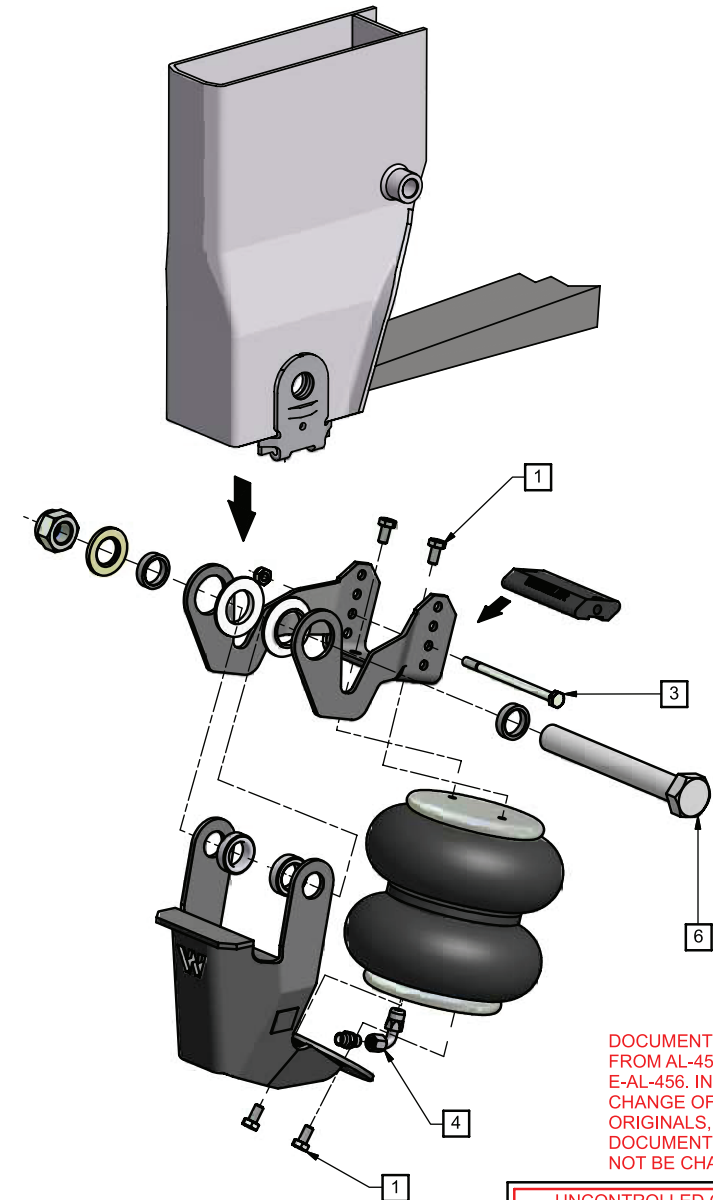
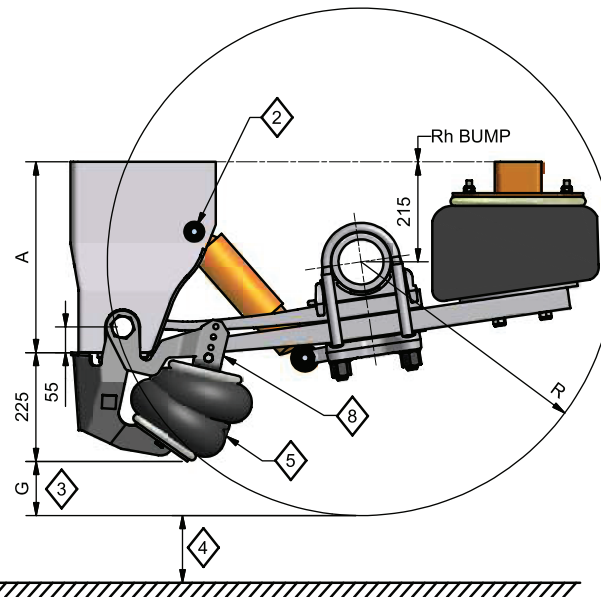
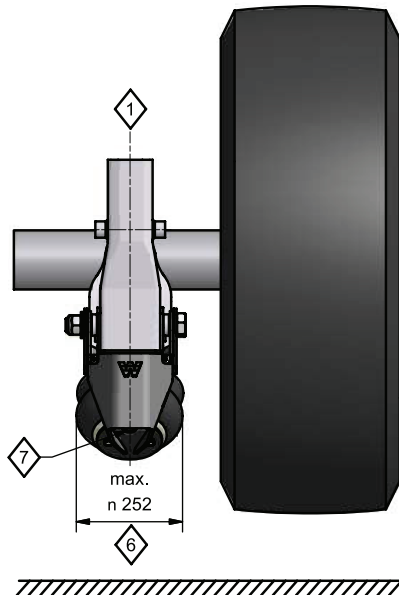
- twin tyres are being used;
- it concerns a steering axle;
- a disc brake axle is being used. In some cases disc brakes are possible, please contact Weweler for exact systems.

EXPLANATION

- 1 Assemble lefthand and right side.
- 2 Recommendation: Position of nut to outside vehicle.
- 3 Groundclearance G at full axle up travel (loaded without pressure) depends on the airsuspensionsystem and the type of tires. (always check)
- 4 General:
The clearance between the road and the tire when the axle is lifted = axle up travel minus deformation of the tires.
- 5 Not lifted: pressure = 0 bar.
- 6 The airspring is not allowed to hit any other parts. Keep a free diameter of 280 mm for moving parts.
- 7 Air-connection (standard 10 mm)
- 8 The Position of the rubber support is dependent on the type of suspension system, contact Weweler for the correct position.

TORQUE

Fastener	Torque [Nm]	Tolerance [Nm]
1 Airspring	(M10) 30	± 10
3 Rubber Support	(M10) 50	± 10
4 Airconnection	(G1/4") 20	± 10
6 Pivot Bolt	(M27/M30) 800	+50 / -0



DOCUMENT DERIVED FROM AL-456 & E-AL-456. IN CASE OF CHANGE OF THE ORIGINALS, THIS DOCUMENT WILL NOT BE CHANGED

UNCONTROLLED COPY
NO RIGHTS CAN BE CLAIMED FROM THIS DOCUMENT



rev:	-	last rev:	Modification on last revision:
date:	1-6-2006		
by:	RTS		
ckd:	1		